

5R SERIES

COMPACT CAN DO MORE



JOHN DEERE



COMPACT CAN DO MORE

Featuring outstanding fuel efficiency, brimming with power and loaded with versatility and comfort features, the 5R is in a class of its own. This is the tractor for all you do, and everything you've always wanted to.

**EXCELLENT FUEL EFFICIENCY*
RESULTS IN THE DLG
POWERMIX TEST**





Finally, there is a light and nimble tractor that also lets you handle all your heavy loads – behind you and in front of you. Built for ultimate versatility, the 5R can easily be fitted with an R-Series front loader, and is equally at home on the road and in the paddock. This tractor means business: fuel efficient performance at a level of comfort and ease of use that is focused on getting things done – more of them, faster, better.

CONTENTS

Introduction	2
Overview	4
Front loaders.....	6
Versatility	10
Engines.....	12
Transmissions.....	14
Cab & Control Concepts.....	16
Ride Comfort & Stability	22
Hydraulics, Hitches & PTO	24
Precision Ag Solutions.....	26
Connected Farm Management.....	28
Specifications	30

MANY APPLICATIONS, ONE TRACTOR

Creating opportunity is the lifeblood of every business. Doing more with less frees up resources that can be used to improve and achieve. The 5R is your tractor for that. For the 5R, we've pulled together premium features that used to be available only in much larger models. They have been packaged into one incredibly agile tractor with the power to move mountains – and to give your business a boost towards greater productivity and more opportunity.

GREAT FOR FRONT LOADER WORK

Electric joystick with reverser and gear shifting, 117 L/min PFC, dedicated JD Click&Go loaders attach with superior ease.

EXTRA MANOEUVRABLE

The short 2.25 m wheelbase results in an incredibly tight 3.75 m turning radius with the front loader attached.

SUPERIOR VISIBILITY

The low hood, panorama front windscreen and the panorama roof bring amazing visibility to the 5R cab.

COMPACT ROBUSTNESS

With a maximum permissible weight of 8.6 tonnes, the 5R's 4.3 tonnes of payload represents a whopping 48% increase over the previous series. Now the 5R could even carry another 5R!

OUTSTANDING COMFORT

The 5R features truly premium specs – front axle suspension (auto, lockable and adjustable), cab suspension and a premium seat.





HANDS-FREE STEERING

AutoTrac™ prevents costly overlaps and gaps while you relax, free to focus on other tasks.

GREAT IN THE Paddock

Up to 8 PowerShift gears with 12 gears in the 4-12 km/h working range, 8% power bulge, up to 5,677 kg lift capacity, iTEC basic and a 5RN narrow model available.

GREAT FOR TRANSPORT

7.5 kW (10 hp) Transport Power Management (TPM), full speed at 1,750 rpm, auto clutch, cruise control, auto mode and two start off gears.

TOTAL EASE OF USE

Intuitive controls, universal John Deere tractor user experience – CommandARM™, right hand console, Electrohydraulic (EH) SCVs, E-rear hitch, easy cab entry and egress, corner post PDU+ display.

FUEL EFFICIENT

ECO function (1,750 rpm), 287 g/kWh* diesel only fuel consumption.

*Internal John Deere calculation based on DLG PowerMix

BUILT TO LIFT

Always a perfect match, tractor and loader are designed and built for each other. Get the 5R with the 543R Front Loader and take advantage of the efficient ease of use only our fully integrated design can deliver.

Whether you're working with buckets or forks our auto latch system lets you automatically lock and unlock implements with the conveniently located release handle.



R SERIES FRONT LOADERS: BUILT FOR THE 5R

Raise your game right from the start. It has never been easier to bring powerful front loader capabilities to your business. Thanks to our Automatic Latch designs, installing the loader and implements is as easy as click & go. The self-levelling option guarantees perfectly balanced application of the 5R's power to whatever your work demands. Our original levelling link design makes more power available for lifting and never gets in the way of the operator's view of the action. Whether the loader is electronically or mechanically controlled, it is operated by a dedicated valve.

	543R (NSL*, MSL)
5090R, 5100R, 5115R, 5125R	■

*Due to legislation, NSL loaders are not compliant in Australia



UNDERSLUNG LEVELLING LINK

Because the levelling link is underslung it cannot impair the operator's view. It also conveys more power along the loader shafts, provides easy access for servicing and allows greater steering angles.



AUTOMATIC MAST LATCH

Mounting our front loaders could not be quicker, safer or more convenient thanks to the self-correcting floating system of the built-in automatic mast latch. Separating tractor and loader is just as easy.



LOADER LIGHTS

Purpose-built John Deere loader lights (available as an option), provide the consistent and reliable illumination that you need when working with a front loader in darkness or poor visibility.



EASY-FIT

Every 5R tractor can be fitted with a loader-ready package ex-factory, including mounting frames, hood protection, in cab joystick and all the internal electrical and hydraulic connections.

LOADER SUSPENSION

Its effective damping protects the material you are handling as well as your tractor, and improves operator comfort on the road. It can be activated/deactivated via the suspension button on the joystick.

BORN TO FRONT LOAD

Your front loader requirements were integral to the design process for the 5R. Because, what good is even the best front loader if it can't get to the load? With its short 2.25 m wheelbase, reduced overall length, and excellent turning radius of 3.75 m, the 5R is designed to go to wherever your load may be. Tight spaces are the 5R's specialty.



Variable Ratio Steering off

Variable Ratio Steering on

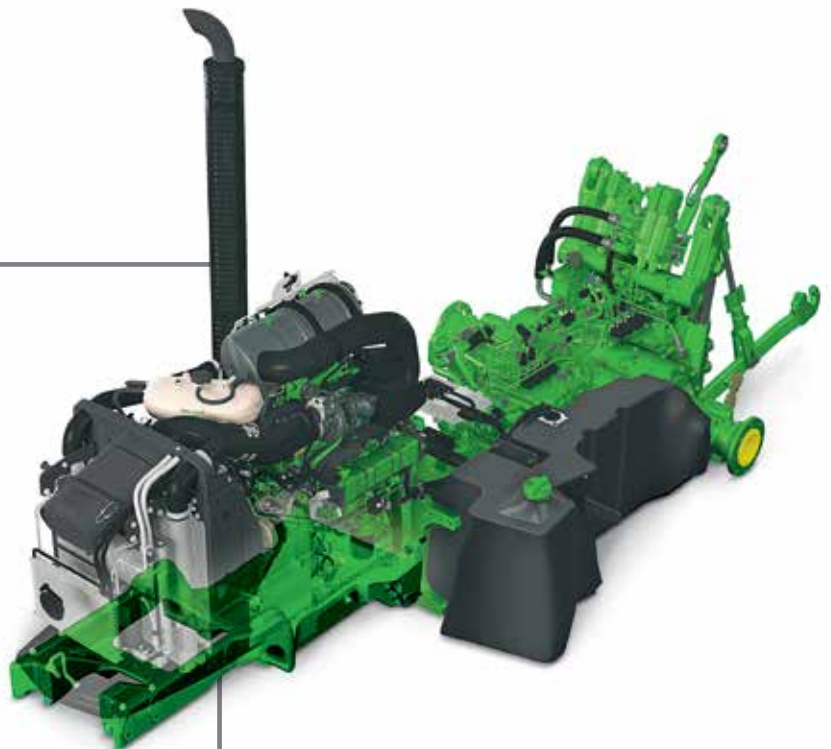
VARIABLE RATIO STEERING

This optional steering improves operator comfort, requiring less hand movement and less steering effort when turning on the headland or in confined spaces. The resulting faster turning of the steering wheel increases hydraulic flow, leading to quicker response of the tyres.



THE FRAME YOU CAN DEPEND ON

The super strong integrated casting frame of the 5R gives you the rock-solid foundation from which to master even the most challenging front loader tasks. The curved frame puts the centre of gravity low, so that you'll always have superior balance, no matter what terrain you are on.





Take command – Two great choices for easier, safer and more efficient front loader work. The CommandQuad™ and the Command8™ transmission options both bring you enhanced clutchless auto-shifting, and the PowrReverser™ simplifies working with a front loader with clutchless forward/reverse direction changes.



ENJOY THE VIEW

The optional panorama roof, the panoramic windshield, and the low hood opens up your field of vision and lets you focus your attention on your front loader tasks like never before.



MORE POWER AHEAD

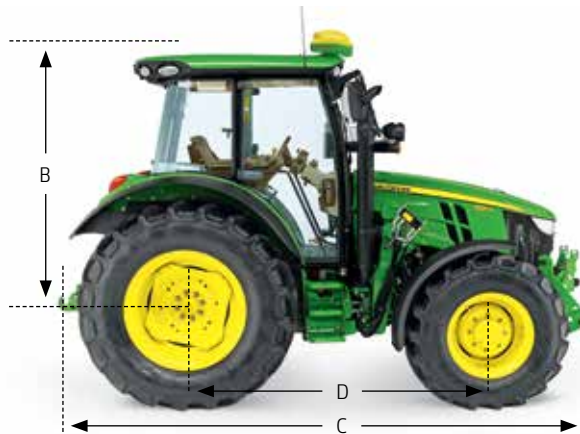
Get the power and control you need for any front loader job. The 5R's advanced Pressure and Flow Compensated (PFC) hydraulic system can produce a flow of up to 117L/min. Another first in this class of tractor.



JOYSTICK OPTIONS

Mechanical and electronic joysticks are mounted on the armrest or the CommandARM™. The re-assignable electronic joystick* has up to 5 functions, including Gear Shift Switch (GSS), reverser function, gear shifting, and 3rd and 4th independent hydraulic functions.

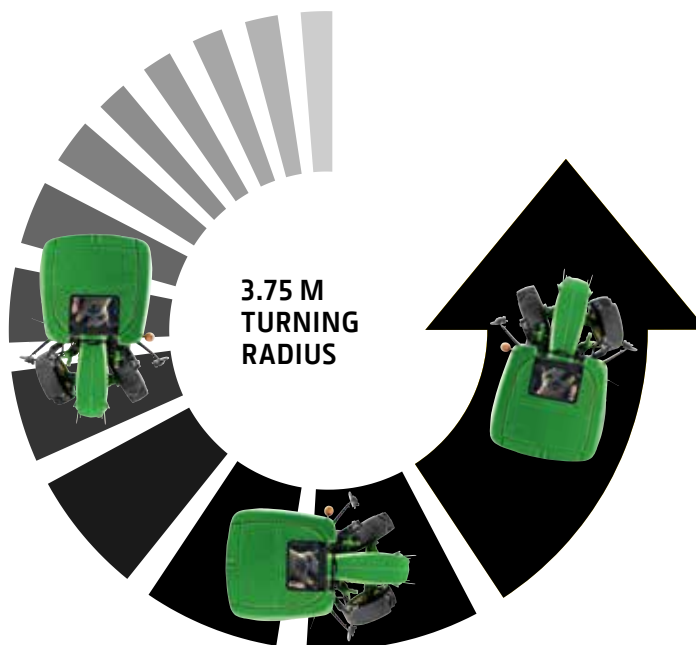
*Now optionally re-assignable from mid to rear SCVs



BE GREAT, NOT BIG

Imagine that you own two amazing tractors. One is compact, light and nimble. You can get it into even the tightest spaces. You love its manoeuvrability. It's light, fuel efficient and incredibly easy to operate. The other tractor is brimming with power, strong, stable, solid. It will lift whatever you put in front of it. Now forget the two tractor idea. The 5R is the one that has it all. With its compact footprint and a short wheelbase of just 2.25 m, the 5R is as nimble as they come and will go anywhere you need it to be. We've equipped it with the power to do all the heavy work you'd usually call upon its bigger brothers for. It starts at a light 4.3 tonnes, but punches way above that class – so you can give it all the loader work you've got. Final proof that you don't have to be big to be great.

Great in small spaces – If you could express productivity in metres, that number would be 3.75 m. Even with the loader mounting frames and loader connected, the 5R maintains this excellent turning radius. It's perfect for effective front loader work in tight spaces.



DIMENSIONS	5R STANDARD VERSION	5R NARROW VERSION
(A) Width	2,150 mm	1,700 mm
(B) Relative height*	1,937 mm	1,937 mm
(C) Overall length	3,753 mm	3,753 mm
(D) Wheelbase	2,250 mm	2,250 mm

*Centre of rear axle to top of cab roof

OUTSTANDING FUEL EFFICIENCY

Get all the power you'll ever need, and still meet iT4 emissions standards. Save big on fuel too. The 5R Series tractor's renowned, diesel-only, 4.5 L PowerTech™ PWX engine consumes only around 287 g/kWh. Most other tractors in this segment need more than 300 g/kWh[^].

JUST ADD... NOTHING

No additives required. By combining Cooled Exhaust Gas Recirculation (EGR) technology with an intercooler and Diesel Particle Filter (DPF), iT4 emissions standards are met without the need for any additives.



BUILT FOR THE FARM

Like all John Deere power units, the PowerTech PWX 4-cylinder, 4.5 L High Pressure Common Rail engine was carefully engineered for the demands of agricultural applications. Full speed is reached at just 1,750 rpm. Transport Power Management (TPM) boosts the rated power for on-demand benchmark power density. An extra 7.5 kW (10 hp) is available on tap in transport situations. Wastegated turbocharging combined with advanced emissions control technology, ensure a long clean life for this engine.

5R MODELS (RATED POWER 97/68EC)

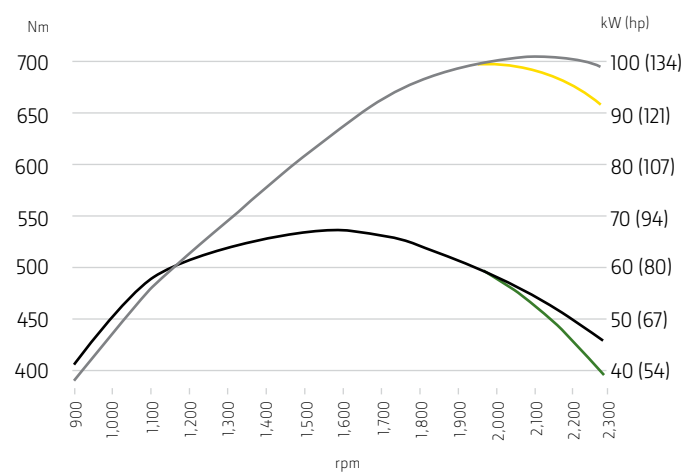
5090R	67.1 kW (90 hp)	74.6 kW (100 hp) with TPM	4-cyl.
5100R	74.6 kW (100 hp)	82 kW (110 hp) with TPM	4-cyl.
5115R	85.8 kW (115 hp)	93.2 kW (125 hp) with TPM	4-cyl.
5125R	93.2 kW (125 hp)	100.7 kW (135 hp) with TPM	4-cyl.

[^]Based on internal test conducted by John Deere according to DLG PowerMix standards

Superior efficiency –
The John Deere 4.5 L
PowerTech PWX 4-cylinder
engines that power the 5R
Series Tractors are renowned
for their efficiency. Smart
technology that's right for
our times and your business.

**DIESEL
ONLY**

5125R



- Power w/ Boost
- Torque w/ Boost
- Power w/o Boost
- Power w/o Boost

Ultimate power – When nothing short of spectacular will do. The 5125R delivers an impressive 93 kW (125 hp), and 101 kW (135 hp) with TPM boost.

TRANSMISSIONS: CHOOSE PRODUCTIVITY

YOU'VE GOT OPTIONS

We give you two distinctive options because only you can decide what's best for your business. Whichever you select will be a solid choice for productivity, fuel efficiency and operator convenience. That's what the 5R is all about. Choose between the CommandQuad™ transmission option with four PowerShift™ gears (1-4) in four ranges (A-D), and the Command8™ transmission with eight PowerShift gears (1-8) in four ranges (A-D). Both options bring you enhanced clutchless auto-shifting so that you're always in the right gear for the task at hand. Both are built entirely in-house by us, carefully engineered to make you feel like your job just got a whole lot easier.

COMMAND8

We see every single unnecessary motion we can remove from your day as a small triumph. The goal is simple: less for you to do, and easier for you to do it. You'll appreciate the intuitive operation with a single control lever, eye-catching orange range buttons, all in a common John Deere layout. Essential efficiency features such as cruise control, auto clutching, PowrReverser™ and automatic gear and range shifting in Auto Mode, allow you and your tractor to achieve optimal levels of productivity while consuming as little energy and fuel as possible.



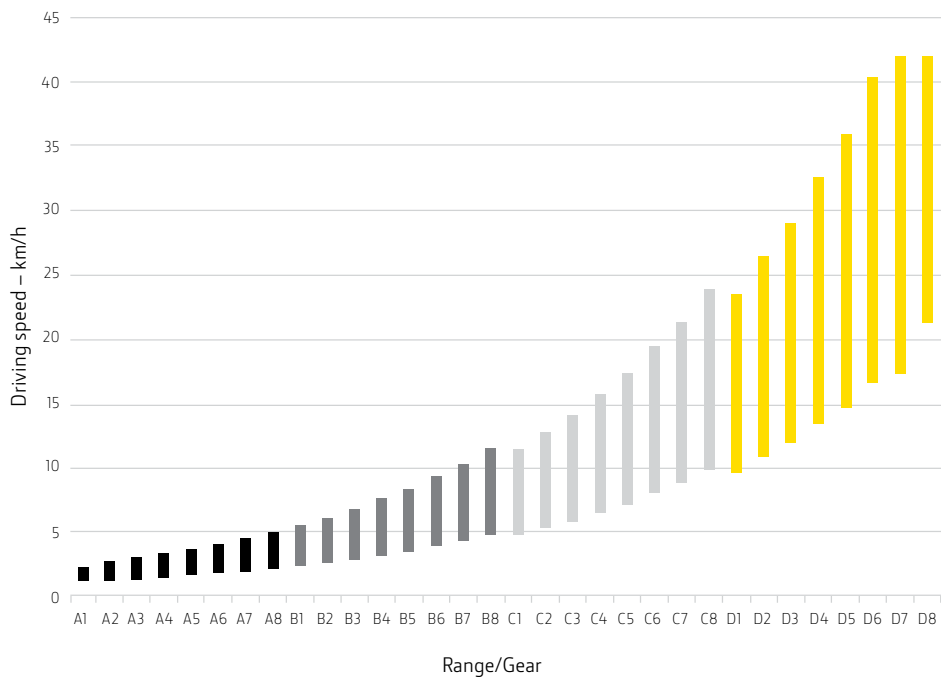
	COMMANDQUAD MANUAL	COMMANDQUAD	COMMAND8
Total number of gears (F/R)	16/16	16/16	32/16
Number of PowerShift gears	4	4	8
Max. speed	40 km/h	40 km/h	40 km/h
Number of ranges	4	4	4
Auto function	–	■	■
2 start-off gears	■	■	■
2 set speed	–	■	■
Creeper	□	–	□
ECO function	–	–	■

■ Base

□ Optional

– Not available

You know what you need – it's our job to deliver choices. Here are yours – productivity guaranteed.



Always optimal – The Command8 transmission ensures that power and torque are always transmitted in the most efficient manner, under any conditions, in all applications.



BIG VIEW, ULTIMATE COMFORT

Imagine a workspace that by its very design helps you do a better job. Where complex tasks are accomplished with intuitive ease. This is the 5R cab – where it is all about making your tractor easier to operate. Your needs, your choice. Both the 5R's right-hand console and the CommandARM™ were designed according to best-practice ergonomic principles and in perfect alignment with the Primary Display Unit (PDU+) in A-post. There's more glass around and above you, for a completely unencumbered view. All in a premium look and feel that has not been seen in a tractor of this class until now.



IN AND OUT WITH EASE

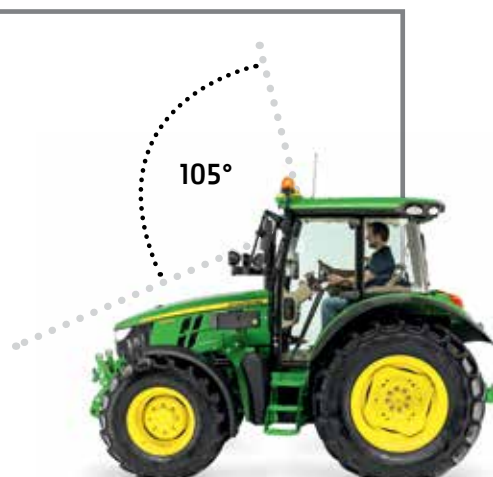
This cab is not just a pleasure to be in, we also made sure that you can get in and out safely and effortlessly. The tilt adjustable steering column lets you find the perfect seating position. A comfortable instructor seat is also available.



PANORAMA ROOF

You'll feel much better about all that weight on your loader with the spacious view through the 5R's optional panorama roof. See where everything is and where it needs to go.

A lot more front visibility – Having a better view of the action right in front of you is critical in many situations. So we've brought the hood down as low as we could. This low hood design in combination with the optional panorama roof provides an optimum 105 degree front visibility angle. Perfect for all front loader applications.



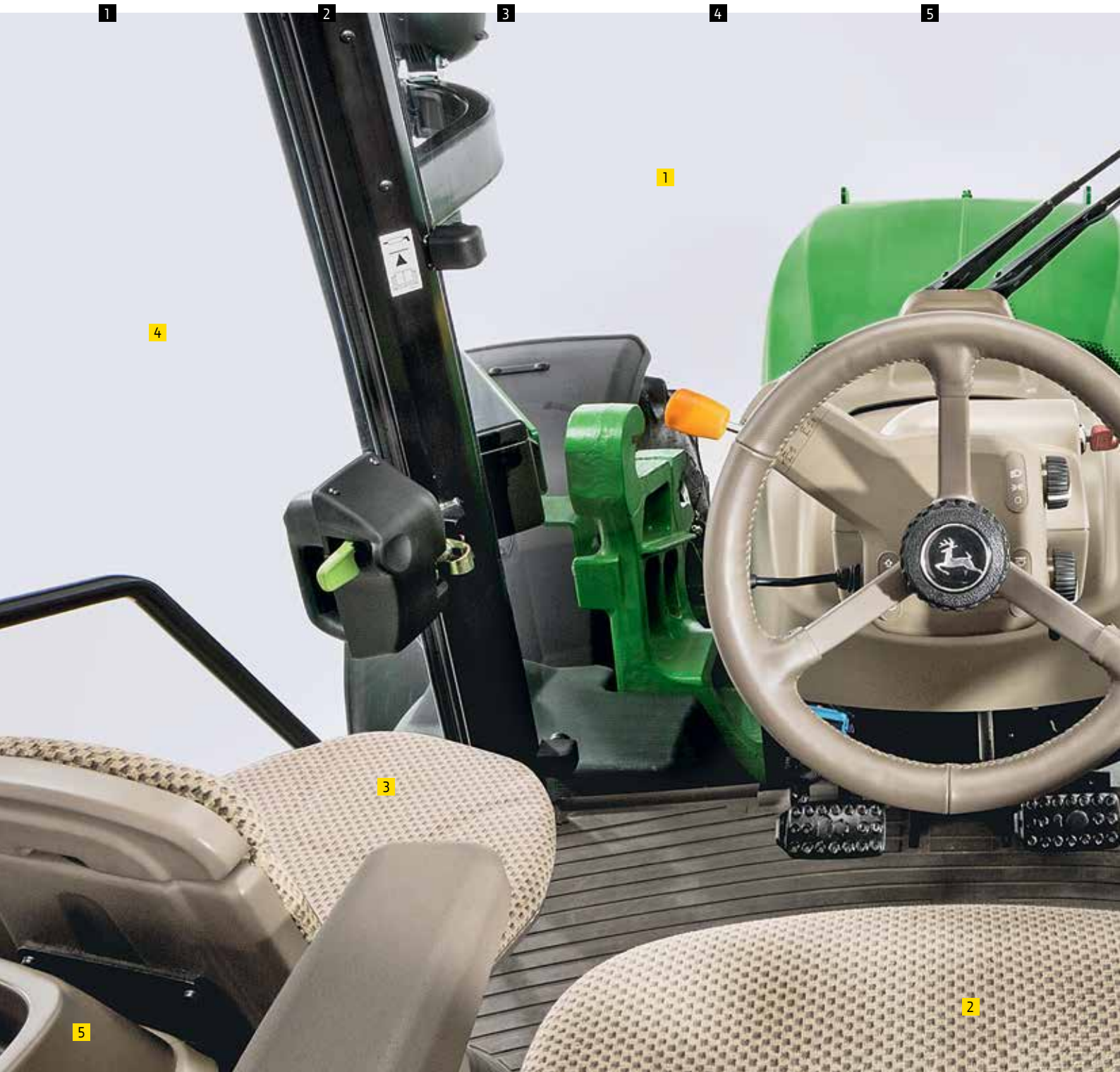
Panoramic windscreen for maximum visibility

Premium seat

Comfortable, foldable instructor seat

Wide opening doors for easy entry and egress

Left hand storage compartment



AT EASE, IN FULL CONTROL

Better controls mean more control. Make easy work of complex operations and manoeuvres with the CommandARM™ – an advanced man-machine interface designed for effortless fingertip control and monitoring of all tractor functions. In conjunction with the Primary Display Unit in A-post, the CommandARM provides a thoroughly intuitive interface to your 5R.

Operate all transmission functionality. Control all SCVs with easy to recognise colour coded fingertip levers. Precision dial engine speed with the hand throttle, and control rear hitch. It's all about what works for you. Get ready to control your day.

Right hand console

PDU+ (Primary Display Unit)
in A post

Multiple transmission options

iTEC Basic™

New Command Arm: for
standard, narrow and
panorama roof cabs



PRIMARY DISPLAY UNIT (PDU+)

ONE GLANCE, ALL THE INFORMATION



Engine menu – Cruise function, exhaust filter



Hitch menu – Load depth, upper limit, drop rate



Transmission menu – Eco engine speed, reverser ratio



Drop PTO off – Drop to target – PTO not engaged



Drop PTO on – Drop to target – PTO engaged



Load anticipation – Engine speed adjusts for PTO/rear hitch

iTEC

iTEC Basic menu – iTEC on/off, and choose functionality



Maintenance menu – Check/control service interval + diagnostics



Display adjustment menu – Display configuration and setup



INSTANT STATUS

Located on A-post, in direct line of sight, PDU+ shows important messages and warnings about essential tractor functions. It is conveniently operated by a rotary knob on the right hand console or the CommandARM™.

RIGHT HAND CONSOLE

At a more basic level, you have the option of the 5R's Right Hand Console – ergonomically designed, with the most essential controls within easy reach for you.



ROCK SOLID COMFORT, ANYWHERE

You'll feel like nothing can ever throw you off balance in the 5R. Stay more alert and productive in the knowledge that your 5R can handle any kind of terrain with ease. It's strong integrated casting frame puts the centre of gravity low, enabling excellent balance and performance even on tricky hillside terrain. Large rear tyres with a diameter of up to 1.65 m, bring more muscle to the ground.



**YOU'LL FEEL NATURALLY
AT EASE IN THE SPACIOUS
COMFORT OF THE 5R CAB**

Air-suspended seat –
For extra comfort, the air
suspension seat is available
with a seat heating option.



FRONT AXLE SUSPENSION – UNCOMPROMISING COMFORT

The arms of the optional suspended front axle smoothly adapt to changes in terrain for truly outstanding in-field performance. The suspension is lockable for added precision, but can automatically adjust to keep the front axle level with changing loads for rock solid tractor balance. It all adds up to superior ride comfort with maximum functional effectiveness.



MECHANICAL CAB SUSPENSION

You will appreciate a ride surprisingly free of unpleasant vibrations and shocks. Over a long day such discomfort can be tough to deal with, and cause fatigue that can become a safety and health risk. The optional maintenance free mechanical cab suspension takes care of all the rough spots and brings you a smooth ride throughout.



FULL POWER, PRECISION CONTROLLED

The advanced hydraulics system of the 5R is all about connecting its skilled operator directly to the implement. No time lost, no power lost, with refined control of every motion. 5R tractors are equipped with up to 7 selective control valves, 3 in the mid and 4 in the rear position. The Pressure and Flow Compensated (PFC) hydraulic system is capable of producing a maximum flow of 117 L/min whenever the system loading requires it. Power and control where you need it, when you need it.



ULTRA-STURDY REAR HITCH

Hook up whatever you need for the job. Built to handle even the heaviest of implements, the super robust rear hitch of the 5R has a maximum lift capacity of up to 5,677 kg*.



BETTER HEADLAND TURNS WITH iTEC BASIC

The optional Intelligent Total Equipment Control (iTEC) Basic co-ordinates the control of implements when executing headland turns by automatically disengaging PTO, diff. lock and 4WD.

Better access – Positioned for easy access between the rear hitch rails, the SCV stack groups together up to 4 SCVs, Power Beyond couplers and the Pressure-Free Return circuit valve in one convenient location.



*Maximum lift capacity at hooks

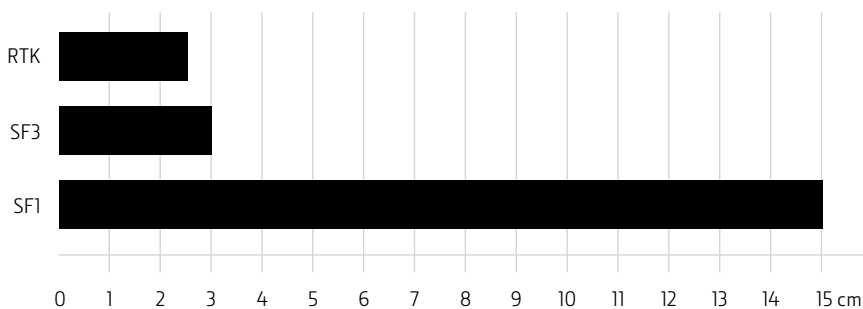
MAKE THE MOST OF YOUR DAY

AutoTrac™ hands-free steering adds more comfort: It reliably steers your tractor from day to night, through dust or on hilly terrain, and prevents costly overlaps or gaps for continuous peak performance.

Using AutoTrac you can expect up to 8%* input savings and up to 14%^ productivity increases. Choose between AutoTrac Ready or AutoTrac Complete, which also gets you the Gen4 4240 Universal Display, a StarFire™ 6000 Receiver and an AutoTrac activation – the full ready-to-go package.

EVEN BETTER SIGNAL ACCURACY

With the new StarFire 6000 receiver you will experience a new level of accuracy, signal stability and repeatability. SF1 has been improved to 15 cm pass-to-pass accuracy, free of charge. SF3 is now at 3 cm pass-to-pass accuracy and 9-month in-season repeatability. And RTK now gives you 2.5 cm pass-to-pass accuracy and features long-term repeatability including 14 days RTK Extend if you lose line of sight or mobile network.



* From 'Lohnunternehmen' 1/2010
 ^ From 'Landtechnik' 6/2006



GEN4 4240 UNIVERSAL DISPLAY

Easy and intuitive with tablet-like swiping and on-screen context-based help. It's AutoTrac™ and section control-capable and fully ISOBUS AEF certified. With an active JDLink™ Connect subscription the display also supports wireless data exchange with the John Deere Operations Center.



CONNECTED FARM MANAGEMENT

You're managing a complex enterprise. That's why optimising the overall business depends on being well connected to your ongoing operations.

The Operations Center on our Ag web portal MyJohnDeere.com makes it simple. It connects you to your machines and your paddocks from one central location. It also allows you to exchange information seamlessly with your John Deere dealer, your contractor or other trusted partners.

WORK SMARTER. NOT HARDER.

The combination of AutoTrac™ and the John Deere Operations Center allows you to prepare all your paddock boundaries, guidance lines and implement offsets during off-peak season and send them to your machines with a simple click. As field work is completed, documentation data is automatically uploaded from your in-cab display to your personal Operations Center account. This saves valuable time in peak season and improves efficiency.



JDLink™ is the key to your tractor's connectivity – linking you, your machine and your office together.





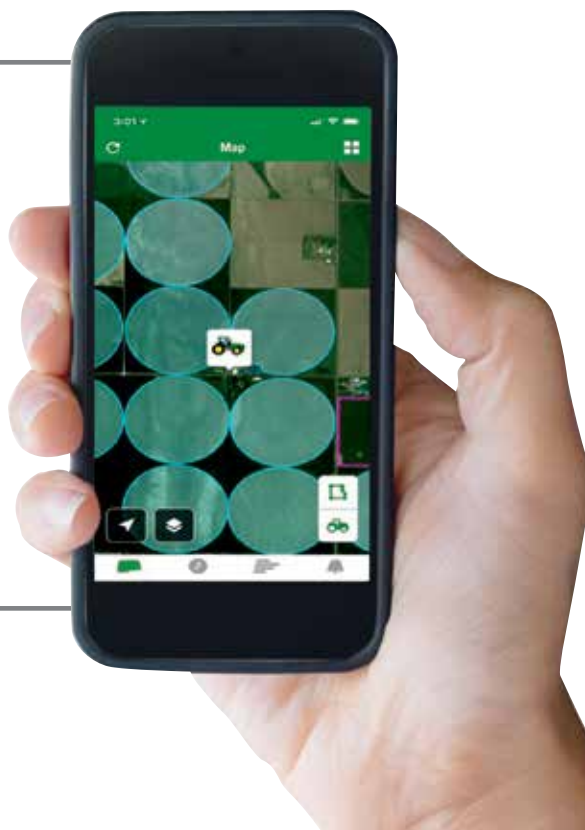
CONNECTED SUPPORT

A machine connected with JDLink helps your dealer to connect with your in-cab display and remotely assist you with machine setup and operation, leveraging Remote Display Access. Service ADVISOR™ Remote enables your dealer to install the latest software updates, read out diagnostic trouble codes on demand, or perform various recordings to support initial error diagnosis. It's much quicker and more cost-effective than in-paddock visits. Based on software algorithms, Expert Alerts will help service technicians to predict certain upcoming issues before they arise, so that they can react quickly and increase uptime significantly.

Ideally, you should be connected with a Dealer Service Agreement to train and support you with the use of these technologies.

MYOPERATIONS™ APP

John Deere MyOperations takes remote management of your paddock operations and equipment to the next level. It connects with the John Deere Operations Center, empowering you to evaluate expected vs. actual performance of job execution and machine utilisation.

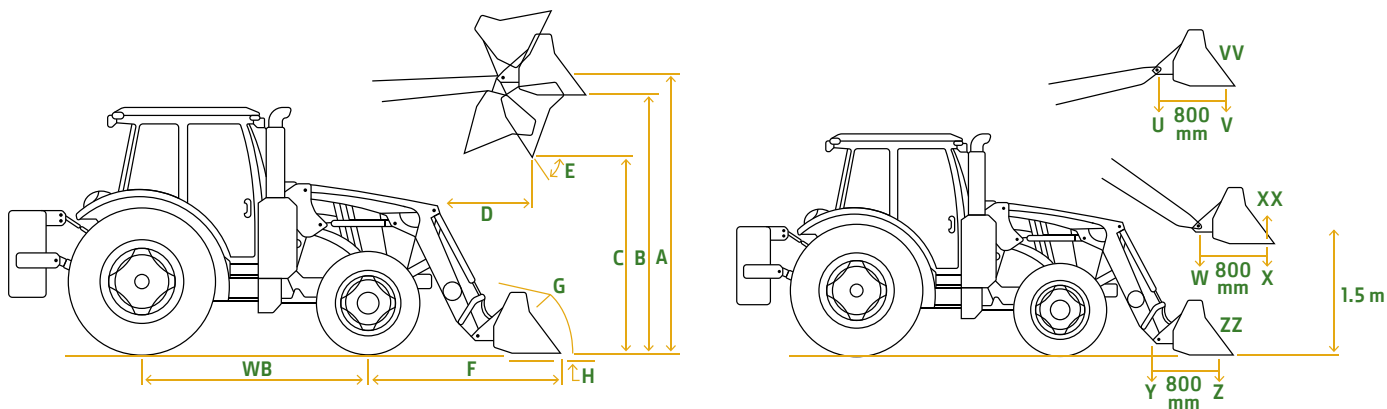


SPECIFICATIONS

MODEL	5090R	5100R	5115R	5125R
ENGINE PERFORMANCE				
Rated power (97/68EC), kW (hp)	67.1 (90)	74.6 (100)	85.8 (115)	93.2 (125)
Rated power with TPM (97/68EC), kW (hp)	74.6 (100)	82 (110)	93.2 (125)	100.7 (135)
Max. power (97/68EC) kW (hp)	69.3 (92.9)	81 (108.7)	93.2 (125)	100.7 (135)
Constant power range, rpm			1,650-2,200	
Torque reserve, % percentage	36	36	36	33.8
Maximum torque, Nm (@ 1,500 engine rpm)	393	437	502	534
Rated speed, rpm			2,200	
Manufacturer			John Deere	
Type			PowerTech™ PWX	
Aftertreatment			EGR - DOC - DPF	
Aspiration			Turbocharger with wastegate	
Cylinders / Displacement			4 / 4.5	
Cooling system			Liquid cooled	
Fuel injection system & control			High pressure common rail system, electronically controlled	
TRANSMISSIONS				
CommandQuad™ Manual				
16F/16R 40km/h (base)	-	-	-	-
16F/16R 40km/h - w/ Creeper (optional and requires PFC Hydraulics code 3223)	-	-	-	-
CommandQuad				
16F/16R 40km/h - w/ Auto function (optional)	-	-	-	-
Command8™ (requires PFC Hydraulics code 3223)				
32F/16R 40km/h - w/ Auto and ECO function (optional)	-	-	-	-
32F/16R 40km/h - w/ Creeper (optional)	-	-	-	-
AXLES				
Suspended front axle (optional)	-	-	-	-
Engagement front differential lock		Standard axle: Limit slip differential - Suspended Front axle: electrohydraulic		
Engagement rear differential lock		Electrohydraulic		
Rear axle		Flange axle		
STEERING				
Type		Hydrostatic		
HYDRAULIC SYSTEM				
Type		Pressure & Flow Compensated (PFC) or Open Centre (OC) system with load sensing function		
Flow at rated engine speed base/option, L/min		117 / 96		
Selective control valves		Up to 4+3		
Power Beyond		Optional		
3-POINT HITCH - REAR				
Type		Electronic lower link sensing; load & depth control, infinite mix		
Category		II		
Base maximum lift capacity at hooks, kg		5,045		
Base lift capacity through full lift range (OECD 610 mm), kg		3,164		
Maximum lift capacity at hooks, kg		5,677		
Lift capacity through full lift range (OECD 610 mm), kg		3,569		
3-POINT HITCH - FRONT, OPTIONAL				
Type		Front hitch controlled by rear SCV		
Category		II		
Maximum lift capacity at hooks, kg		3,160		
Lift capacity through full lift range at the hooks, kg		2,695		
REAR PTO				
Type		Electrohydraulic engaged		
FRONT PTO, OPTIONAL				
Type		Electrohydraulic engaged		
Engine speed at rated PTO speed (1,000), rpm		2,000		
CAB				
Specifications		Standard cab or optional panorama roof		
Suspension (optional)		Mechanical		
Noise level at operator's ear, dB(A)		74		
Display		PDU+		
MISCELLANEOUS				
Pedal lock mode		Standard		
Hydraulic trailer brake systems (optional)		2 Line		
Pneumatic trailer brake system (optional)		2 Line		
CAPACITIES				
Fuel tank (base), L		178		
DIMENSIONS AND WEIGHTS				
Wheelbase, mm		2,250		
Width x Height x Length, mm		2,150 x 2,695 x 3,753		
Measured with flanged axle, up to cab roof, from hood to rear tyre and with tyres 16.9 R34.				
Minimum shipping weight, kg		4,300		
Maximum permissible gross weight, kg		8,600		
TYRE SIZES				
Front tyre sizes, max. available (diameter in mm)		480/65R24 (1,260)		
Rear tyre sizes, max. available (diameter in mm)		600/65R34 (1,650)		

Specifications and design subject to change without notice.

MODEL	DIAGRAM REFERENCE	MEASUREMENT	5090/5100/5115/5125R	5090/5100/5115/5125R		
Front tyre			575/13.6R24	575/13.6R24		
Rear tyre			750/16.9R34	750/16.9R34		
Wheelbase	(WB)	mm	2,250	2,250		
Pump capacity		L/min	70	70		
Rated pressure		psi / BAR	2,828/195	2,828/195		
LOADER			543R NSL (*NZ only)	543R MSL		
Bucket			Heavy-duty 1,850 mm	Heavy-duty 1,850 mm		
Bucket weight		kg / lb.	272 / 600	272 / 600		
Lift capacity @ full height	Measured @ pivot	(U)	2,063	4,548	1,699	3,746
	Measured @ 800 mm ahead of pivot	(V)	1,337	2,948	1,715	3,781
Lift capacity @ 1.5 m (59 in.) lift height	Measured @ pivot	(W)	2,210	4,872	2,086	4,599
	Measured @ 800 mm ahead of pivot	(X)	1,652	3,642	1,943	4,284
Boom breakout	Measured @ pivot	(Y)	2,327	5,130	2,547	5,615
	Measured @ 800 mm ahead of pivot	(Z)	1,613	3,556	2,092	4,612
Bucket rollback force	@ Maximum height	(VV)	1,648	3,633	1,699	3,746
	@ 1.5 m (59 in.) lift height	(XX)	2,711	5,977	2,731	6,021
	@ Ground level	(ZZ)	2,565	5,655	2,571	5,668
Maximum lift height	(A)	mm / in.	3,682	145	3,683	145
Clearance	@ Full height - bucket level	(B)	3,442	136	3,443	136
	@ Full height - bucket dumped	(C)	2,678	105	2,680	106
Overall length	(WB+F)	mm / in.	4,649	183	4,649	183
Diggin depth	(H)	mm / in.	-102	-4	-99	-4
Reach	@ Maximum height	(D)	776	31	773	30
	@ Ground - bucket level	(F)	2,399	94	2,399	94
Bucket angles	Dump angle @ full height	(E)	degrees	-58	-58	
	Rollback @ ground	(G)	degrees	47	47	
	Dump angle @ ground		degrees	-151	-100	
Cycle times	Loader raise		sec	4.35	4.03	
	Loader lower		sec	3.26	2.89	
	Bucket dump		sec	3.30	2.22	
	Bucket rollback		sec	2.22	2.22	



*Due to legislation, NSL loaders are not compliant in Australia.

NOTHING RUNS LIKE A DEERE.

Chances are that when you need us, you need us right then and there. For advice, to solve a problem, for a part. Reach out, we'll be there with technicians who are all factory trained, ready to go to work for you, using only genuine John Deere parts and products. Our comprehensive PowerGard Protection Plan™ is designed to keep your equipment running efficiently, and your operating costs within your budget. That's our commitment to your peace of mind.



JOHN DEERE

This literature has been compiled for worldwide circulation. While general information, pictures and descriptions are provided, some illustrations and text may include finance, credit, insurance, product options and accessories NOT AVAILABLE in all countries or regions. In some countries, products and accessories may require modifications or additions to ensure compliance with the local regulations of those countries. PLEASE CONTACT YOUR LOCAL DEALER FOR DETAILS. John Deere reserves the right to change specification and design of all products described in this literature without notice. John Deere's green and yellow colour scheme, the leaping deer symbol, and JOHN DEERE are trademarks of Deere & Company. All photography and illustrations contained herein are copyrighted assets of Deere & Company.

JohnDeere.com.au
JohnDeere.co.nz