

# ONLINK

GOLF COURSE MANAGEMENT



JOHN DEERE  
GOLF





onlink-app

OnApply OnLabor OnEquip

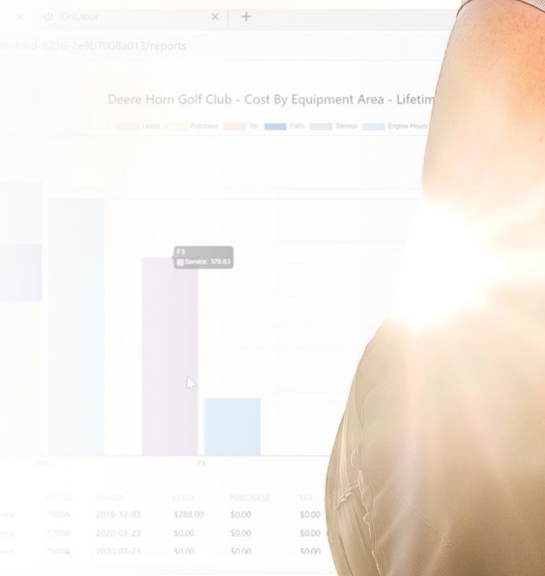
Welcome, Randy

**EQUIPMENT**

Precipitation: 0.065" HOC Greens: \$3,000.00 Equipment Cost: 96% Equipment Availability

**WATER MANAGEMENT**

Water Usage: 56,475 gal Water Cost: \$110,842.91



onlink-app

onlink.deere.com/onlabor/presentation.html#m0016 to do a job

**ONLABOR**

Deere Horn Golf Club

5 PM | 83° F Cloudy, 10% Precip 6 PM | 83° F Cloudy, 11% Precip 7 PM | 80° F

Mow your PPE

**Mow Fairways**

Nathaniel Beckman 5.0  
F1 (John Deere 7500A)

**Mow Greens**

Donald Clark 4.0

Fairways: Double - 12-6  
Greens: Double - 12-6 (3-9)  
Tees: Single - 12-6

onlink-app

Welcome, Randy

Check Drive playing conditions: The 100 - 100 Fairways

Move rakes for high traffic areas: The 100 - 100

Check the pump station: The 100 - 100

Check the Shop: The 100 - 100

Check the 100 - 100: The 100 - 100

Check the 100 - 100: The 100 - 100



Managing irrigation costs.

Balancing crew hours.

Keeping track of maintenance schedules.

How do you keep up, let alone get ahead?

### **Let John Deere OnLink Golf Course Management Solutions help.**

*With OnLink, you'll improve communication between managers and employees, enhance your facility's organisation, and harness data to enable better decision making. Accomplish this and more through integrated labour and fleet management tools enhanced with telematic machine connections.*

#### **If it's on your mind, it's OnLink.**

OnLink can help you balance the load on both your staff and your equipment by providing insight into overtime potential and current equipment hours as you assign each to jobs.

#### **See all.**

Data driven decisions are at your fingertips when you use OnLink. Know what you're spending on jobs on the course or on equipment in the shop. The dashboard will keep you informed on key values and alerts can be setup for when you cross thresholds. And when you need a deeper dive there are a variety of reports to help you dig in deeper.

#### **Know all. All from one place.**

And to make sure you've got all your data in on place for your decisions, OnLink allows entry of additional data such as soil moisture, water usage, and greens speed. OnLink integrates with industry software solutions such as POGO to automate data entry or manual entries can be made right on the dashboard.



## Labour Management

### Fast and Easy Job Management

Effective and portable labour information management. Easily view, add, and assign jobs for anyone on your team, from any device, anywhere an internet connection is available. Replace the whiteboard of yesterday with a digital workboard display—a dynamic, organised alternative.

### Workboard updates made easy

Quickly make changes from your desk or from the course that automatically display on the digital workboard, making it fast and simple for the whole team to stay updated on the latest golf course needs.

### Crew communication, simplified.

With OnLink My Work, your crew can see the work you assign them, and your notes, right from their mobile phone. Personalised to them. Communication and gauging job times will become more accurate and simple.

### Early Warning Indicators

Visual colour-coded indicators provide visibility to the user when overtime hours/cost are approaching user defined and customisable thresholds enabling decisions on crew management before overtime costs are accrued.

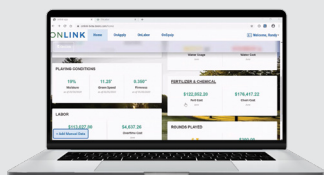
### Reporting

Access a variety of automated reports for dollar allocations, man-hours, and even overtime. All reports are easily exported to Excel. View daily, monthly, and annual reports to gain great insight into how efficiently the operation is running.



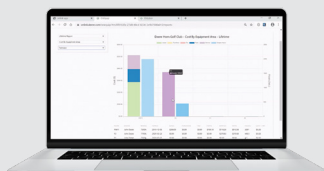
### Operations at Your Fingertips

Customisable dashboards let you see the information you need all in one place in a format that is optimised for mobile viewing.



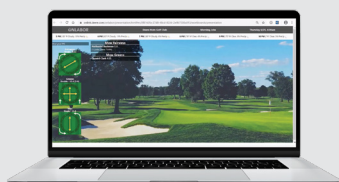
### Labour Management

See the areas of the course that are costing the most in labour. Understand your labour costs for every aspect of your operation.



### Easily Assign Work

Easily assign work and display the assignments on a monitor in the maintenance facility.



“We can track the amount of hours of each piece of equipment to make sure that we’re using them all on a good rotation much more easily.”



#### 2700 TRIPLEX MOWER

ENGINE HOURS: 78.5 hours

WORKING: 25.75 min

IDLE: .75 min

TRANSPORT: 9.16 min

**John Jeffreys**

Golf Course Superintendent  
Pinehurst No. 2



## Fleet Management

### High-Level Fleet Overviews & Profiles

Glance at OnEquip to see the state of your fleet while you're on the go. Integration with OnLabour allows the team in the shop to communicate the status of equipment seamlessly with operators and management.

### Scheduled Maintenance + On Demand Repairs

Preloaded maintenance schedules for John Deere equipment are aligned and updated with current factory recommendations allowing the equipment manager or technician to know what and when service is required and what parts are needed to have on hand to complete the job. Additional on-demand work orders for any make equipment can be quickly created for any ad hoc repairs on equipment that comes into the shop.

### Maintenance Schedule Monitoring

Monitoring equipment service needs is easy with the dynamic maintenance list built into the system. Upcoming services are colour-coded green, yellow, and red allowing prioritisation of work within the shop. A service due tile brings the top 5 priorities right to the user's dashboard.

### Bulk Engine Hours Update

Quickly and easily update equipment engine hours from any internet connected device with a single-entry screen for all equipment. Accurate and up to date hours allow staff to balance usage across the entire fleet and keep maintenance schedules up to date providing better visibility to what services are due.





## Reports

A variety of automated reports provide detailed information on equipment use, availability, and cost of ownership. Detailed equipment information reports for data driven decisions on purchasing or leasing, fleet size, and more. Customisable fleet management practices can be tailored your operation. And all reports are easily exported to Excel.

## Connected Machines

### Equipment Location

Save time locating operators and equipment on the course as well as monitor performance and progress from any internet connected device. Real-time insights into the operation allow for data driven decisions around the day's activities as well as identifying opportunities for adjustments and efficiency improvements.

### Location History

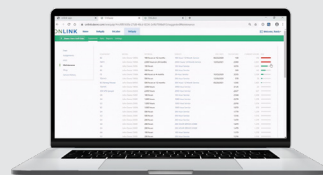
Review colour coded location history information for insights into operational data to identify areas of concern and opportunities for efficiency improvements such as route planning, operator training, and more. All this from anywhere on any internet connected device.

### Automatic Engine Hour Updates

Engine hours within the fleet page update in real-time eliminating the need for time consuming manual entry. Plus, dynamically sort maintenance schedules based on service interval timing.

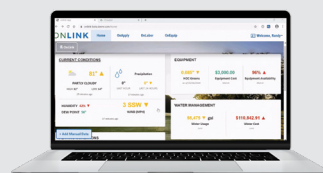
## Fleet Management

See upcoming services due, record service tickets, track equipment availability for job assignments and know your cost of ownership.



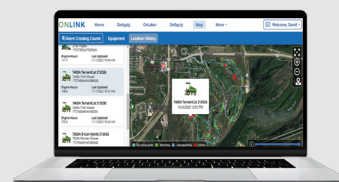
## Environment and Course Conditions

Integrated and input data allows you to see current, forecast and playing conditions all together.



## Connect with Your Machines

Monitor equipment location and location history in real-time from anywhere.





**IF IT'S ON YOUR MIND,  
IT'S ONLINK.**



**JOHN DEERE**  
GOLF



OFFICIAL  
GOLF COURSE  
EQUIPMENT  
SUPPLIER



This literature has been compiled for worldwide circulation. While general information, pictures, and descriptions are provided, some illustrations and text may include finance, credit, insurance, product options, and accessories NOT AVAILABLE in all countries or regions, and in some countries products and accessories may require modifications or additions to ensure compliance with the local regulations of those countries. PLEASE CONTACT YOUR LOCAL DEALER FOR DETAILS. John Deere reserves the right to change specification, design, and price of the products described in this literature without notice. John Deere's green and yellow colour scheme, the leaping deer symbol, and JOHN DEERE are trademarks of Deere & Company.

[deere.com.au/en/golf-sports-turf/](http://deere.com.au/en/golf-sports-turf/)  
[deere.co.nz/en/golf-sports-turf/](http://deere.co.nz/en/golf-sports-turf/)